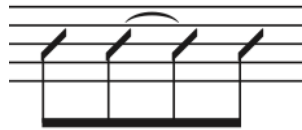


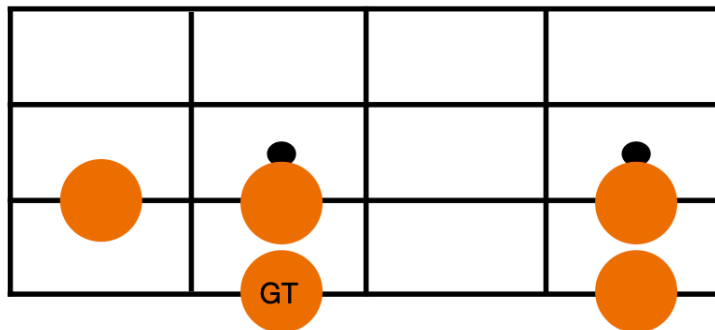
In 3 Schritten zum Bass Fill

Teil 3/3

1.Schritt: Rhythmus für das Fill in



2.Schritt: Griffbild der passenden Töne



3.Schritt: bringe Rhythmus und Töne zusammen

Platz für deine eigenen Kreationen

First exercise musical notation. The top staff is a bass clef in 4/4 time with notes: G2 (quarter), A2 (quarter), B2 (quarter), C3 (quarter), D3 (quarter), E3 (quarter), F3 (quarter), G3 (quarter). The bottom staff is a TAB line with fret numbers: 3 3 3 | 5 5 5 | 3 3 3 | 3.

Second exercise musical notation. The top staff is a bass clef in 4/4 time with notes: G2 (quarter), A2 (quarter), B2 (quarter), C3 (quarter), D3 (quarter), E3 (quarter), F3 (quarter), G3 (quarter). The bottom staff is a TAB line with fret numbers: 3 3 3 | 5 5 5 | 5 5 5 | 5.

Hier meine Version aus dem YouTube Video

Third exercise musical notation. The top staff is a bass clef in 4/4 time with notes: G2 (quarter), A2 (quarter), B2 (quarter), C3 (quarter), D3 (quarter), E3 (quarter), F3 (quarter), G3 (quarter), A3 (quarter), B3 (quarter), C4 (quarter). The bottom staff is a TAB line with fret numbers: 3 3 3 | 5 5 5 | 3 3 3 | 3 3 2 5.

Fourth exercise musical notation. The top staff is a bass clef in 4/4 time with notes: G2 (quarter), A2 (quarter), B2 (quarter), C3 (quarter), D3 (quarter), E3 (quarter), F3 (quarter), G3 (quarter), A3 (quarter), B3 (quarter), C4 (quarter). The bottom staff is a TAB line with fret numbers: 3 3 3 | 5 5 5 | 5 5 5 | 5 2 3 5.