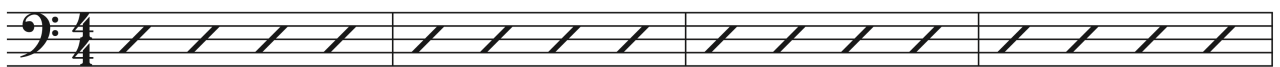


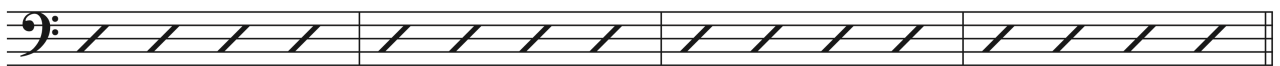
3 Bassfills für Anfänger

Akkordfolge

C F C G

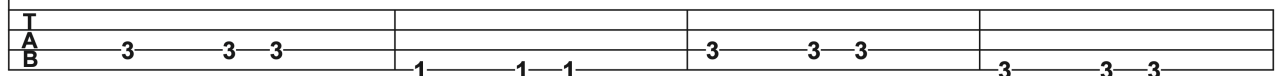
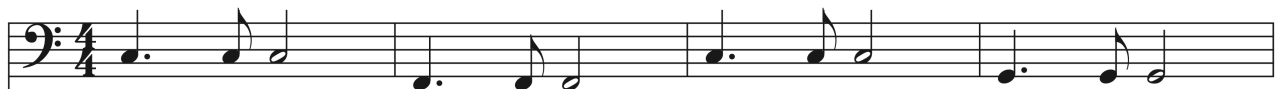


C F G G

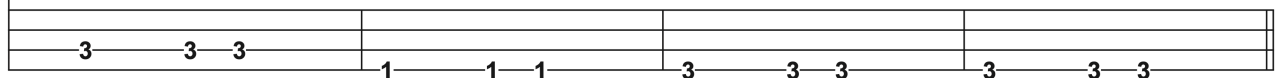


Groove über die Akkordfolge

C F C G



C F G G



Groove mit Füll 1

C F C G

T
A
B 3 3 3 1 1 1 3 3 3 3 3 3

C F G G

T
A
B 3 3 3 1 1 1 3 3 3 3 3 0 2

Groove mit Füll 2

C F C G

T
A
B 3 3 3 1 1 1 3 3 3 3 3 3

C F G G

T
A
B 3 3 3 1 1 1 3 3 3 5 3 2 5 5

Groove mit Füll 3

C F C G

The first system consists of two staves. The top staff is a bass clef staff in 4/4 time, containing four measures of music. The notes are: C4 (quarter), E4 (quarter), G4 (quarter), F4 (quarter), C4 (quarter), E4 (quarter), G4 (quarter), F4 (quarter), C4 (quarter), E4 (quarter), G4 (quarter), F4 (quarter), C4 (quarter), E4 (quarter), G4 (quarter), F4 (quarter). The bottom staff is a guitar TAB staff with two lines. The fret numbers are: 3 3 3 | 1 1 1 | 3 3 3 | 3 3 3.

C F G G

The second system consists of two staves. The top staff is a bass clef staff in 4/4 time, containing four measures of music. The notes are: C4 (quarter), E4 (quarter), G4 (quarter), F4 (quarter), C4 (quarter), E4 (quarter), G4 (quarter), F4 (quarter), C4 (quarter), E4 (quarter), G4 (quarter), F4 (quarter), C4 (quarter), E4 (quarter), G4 (quarter), F4 (quarter). The bottom staff is a guitar TAB staff with two lines. The fret numbers are: 3 3 3 | 1 1 1 | 3 3 3 | 17.

